



Part No: AXIS-TV-GFS

**Description:**

The AxisTV Adobe® Flash® Support Option (GFS) option provides native support for Adobe® Flash®. It allows you to import and play Flash® files in their native format without cumbersome conversion that can degrade quality.

Also, as of AxisTV 6.4, the Import PowerPoint® feature supports conversion to Flash®, which means that slide and element animation effects in the presentation can be preserved. A best-effort mapping is made from PowerPoint® style animation effects to Flash® style effects. This option is available only if Flash® players have been licensed.

In order to support PowerPoint® animation effects, there must be at least one Flash® player licensed. Immediately after uploading a presentation using Import | PowerPoint the slide selection screen displays a checkbox, 'Convert to Flash' where up to 10 slides can be combined into a single flash movie.



**Hardware:**

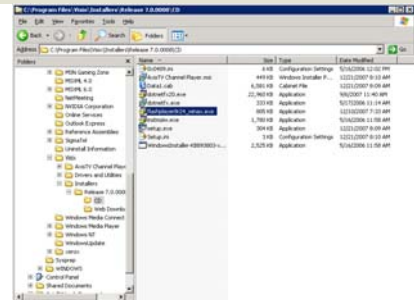
No additional hardware is required for this feature.

**Software:**

AxisTV 6.0 or higher is required to support this feature.

Adobe® Flash® Player version 8.0 or higher for Windows® and Internet Explorer® must be installed on each Channel Player that will be used to playback Flash® files. In addition, Adobe® Flash® Player version 8.0 or higher should be installed on the Content Server to be able to verify uploaded Flash® files.

Adobe® Flash® Player is already installed on factory built Channel Players and Content Servers. In addition, the Adobe® Flash® Player installer is located in the "C:\Program Files\Visix\Installers" folder of the Content Server and Channel Player images.

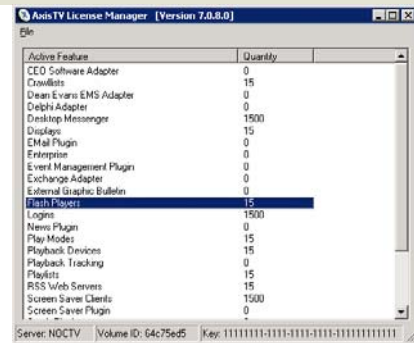


**Licensing:**

Flash® Playback is licensed on a per-player basis. Each GFS must be licensed from Visix before it will be available for use.

The licensing for any GFS purchased at the same time the initial system was purchased will be activated automatically when the Content Server is initialized.

For GFS purchased later, the licensing must be activated manually using the License Manager utility located on the Content Server. An updated GFS license file (Flash Players.lic) will be e-mailed to the customer.



**Configuration:**

The Tei.Settings.xml file, contained within the same directory as the server executable files, must be modified to configure this feature. The portions of the file that control Flash® playback are shown to the right. These options control which channel players are authorized to play Flash® movies.

<Licensing>

```
<FlashPlayers count="0">
  <FlashPlayer1 name="Channel Player DNS" />
  <FlashPlayer2 name="Channel Player DNS" />
</FlashPlayers>
```

</Licensing>